

Avenue
Virginia 22305

\$999,900

Beverly Hills

1941

Detached

Cape

Brick and Frame

Full

Public

Gas Forced Air

Electric

Gas

2

1-Car Garage

\$7,177

Charles Barrett

George Washington

T. C. Williams

5

3

1

16' x 13'

10' x 10'

24' x 11'

18' x 14'

19' x 8'

8' x 7'

18' x 15'

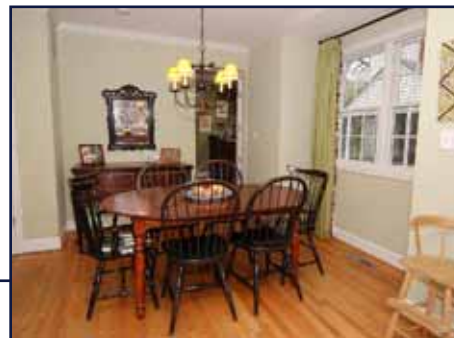
13' x 10'

13' x 10'

13' x 10'

13' x 10'

21' x 18'



an Anthony
795.9536

@mcenearney.com

ee Avenue
Virginia 22305

ell as people who have lived in a home for many years, and nowhere is that truer than in this remarkable property. 521 Tennessee Avenue epitomizes the evolution of a neighborhood. Its extreme livability reflects years of familiarity with what was, and thoughtful insight into what could be, to produce a home both elegant and welcoming. The tendency of homeowners in Beverly Hills to stay and expand, rather than move on; at least six houses in this block alone have received extensive renovation in the

owner might prepare one for a warm interior, but it only hints at the grand spaces that lie within. The wainscoted foyer alone measures 19x8, yet seems part of the grand plantation-shuttered windows and wide columned doorway into the living room.

In addition to the back of the house, and because of the way they entertain, the present owners use the former living room as a dining room, and the former dining room as a living room. Both rooms have plantation shutters. A dining table which seats ten fits easily before the fireplace, with its finely detailed mantel. Rich crown molding and a doorway contribute even more grace to this generous room. The sophisticated living room features an overhead bookshelf that runs around the room and a chair. The kitchen is now the butler's pantry, and boasts glass-and-cherry cabinets with granite countertop, a bar sink and refrigerator, and a powder room with corner sink

The dining room and kitchen date from 2001. After having lived here for several years, the owners knew what they wanted: a space that could accommodate lots of friends and family in a relaxed and comfortable setting. A wall of custom built-in cabinetry flanks the large fireplace, and the back wall holds storage closets. Glowing hardwood floors, crown molding, and a ceiling fan add to the rich airiness of the room, which is enhanced by an atrium door leading to the 12x10 deck.

In both rooms, nothing separates the living space from the 24x11 kitchen. The kitchen is a delight of cherry cabinets and granite countertops, backed by a wall of crown molding and recessed lights. An island with bookshelves and cabinets seats two at its breakfast bar, while the table space easily seats eight. The kitchen features a Profile Series, including a Performance double-door refrigerator with water and ice dispensers, Spectra range with warming drawer, Performance microwave oven/hood, and Performance Quiet Power III dishwasher.

A wainscoted staircase leads to the bedroom level, where a laundry closet in the hall contains the GE Energystar front-loading washer and Frigidaire heavy-duty moisture absorber. A black-and-white tiled hall bath serves the three original bedrooms on this floor, one of which has a ceiling fan. Above the bedrooms, a 36-inch high floored crawlspace

The master bedroom, overlooking the deep back yard, is quietly beautiful and private, and enjoys a windowed walk-in closet with built-in shelving as well as another double closet with crown molding, a ceiling fan and has been newly carpeted. Its sparkling white, 9x11 master bath boasts a sunny corner Jacuzzi soaking tub and separate shower, cultured marble vanity, and recessed lights.

The surprise is the walk-out basement, carpeted in pale Berber that makes the most of both the available sunlight and the recessed lighting. A fantastic daylight rec room with a fireplace, a space and, with three walls of handsome custom bookcases, shelving and cabinetry, unparalleled storage. Space for a 50-inch TV is built in.

The basement features a cheerful guest bedroom with double closet, served by a tiled hall bath with shower. At the back of the original storage room is a large cedar closet for coats and shoes. A one-car rear-entry garage currently functions as the owners' woodworking shop, with workbenches and cabinets.

The home has zone air conditioning, dating from 2001, gas forced-air heat, and an A.O. Smith Promax 50-gallon hot water heater installed in 2002.

The landscaping can be better. The carefully landscaped exterior promises that beautiful things lie in store; the inviting porch beckons one past the greyed wooden bench and inside the home through a winding brick path lined in soft touch holly, to the entrance with its Chippendale-styled storm door. Plantings well suited to the climate include tall walnut include shade-tolerant yew, holly, camellia, hydrangea, azalea, hosta, fothergillia, daffodils, Kousa dogwood and

The backyard offers space for play and outdoor entertaining as well within its decorative board fencing. From the deck, a stairway leads to a large mulched and sized hemispheric stone terrace, shaded by mature poplar and oaks. Low-maintenance perennial plants lie within mulched garden beds and play area behind. There are two storage sheds. The entire roof and all of the vinyl siding date from the addition in 2001.

The home does not convey the curtains nor the chandeliers over the dining room and the kitchen tables. The playground equipment does

The home is in "As Is" condition. The square footage noted in the tax records is incorrect.

Beverly Hills
521 Tennessee Avenue
Alexandria, Virginia

Offered at

Susan A. McEneaney
703.791.1111



www.mceneaney.com

109 South
Alexandria
703.541.1111
fax 703.541.1111



www.mceneaney.com



All information is deemed accurate, but as it is provided by third parties, it is not guaranteed.

*Specializing in
of fine residen*